

THE BOY_{IN THE} STRIPED PAJAMAS

WWW.BOYINTHESTRIPEPAJAMAS.COM

TM & © 2008 Miramax Film Corp. all rights reserved

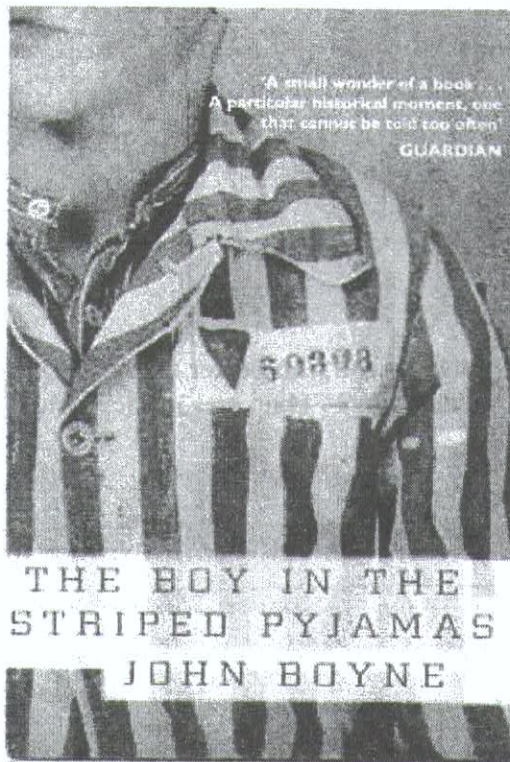


Contents

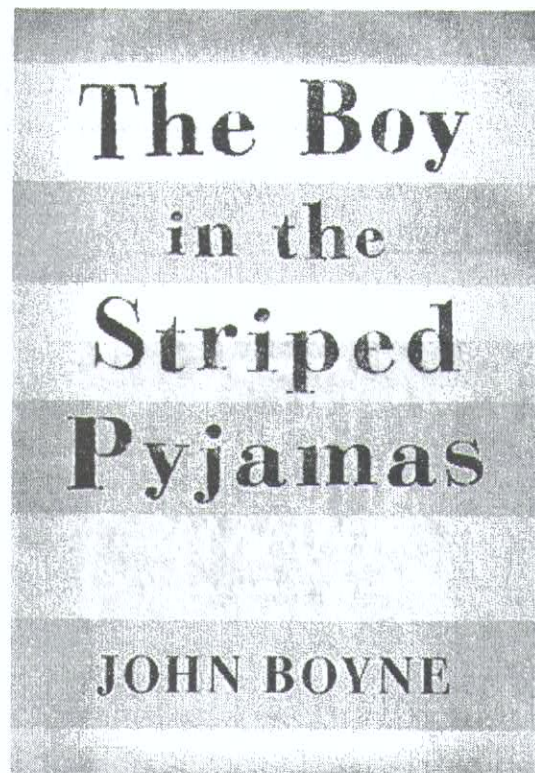
Pre- viewing Activities: Book Cover and Film Poster	3-4
Viewing: Setting	5
Viewing Guide	6-8
Alternative Endings	9
Storyboard Task	10-13
Storyboard Rubric- Marking Criteria	14
Extension Activity- Write an alternative ending	15
Comprehension- True/ False Questions	16
Character Mind Maps	17-19
Comparing Characters	20-21
Plot and Climax	22
Vocabulary Activities	23-26
Empathy Writing Task	27-30
Empathy Writing Task Vocabulary Support	31
Empathy Writing Task Rubric	32
Themes Discussion	33-35
Group Interaction: Themes	36
Author's Note	37
Interview with John Boynes	38-39
Historical Context	40

Pre-viewing activities

Book Cover 1



Book Cover 2



Look at the two book covers above.

Cover 1

1. Why does the book cover look as though it has dirty smudges on it?

.....

.....

2. What is the importance of the number on the pyjamas?

.....

.....

3. Who is this boy?

.....

.....

Cover 2

4. Are the stripes on the pyjamas anything to do with the 'boy' in the title?

.....

.....

5. The presentation seems old fashioned, is this because the story is from the past?

.....

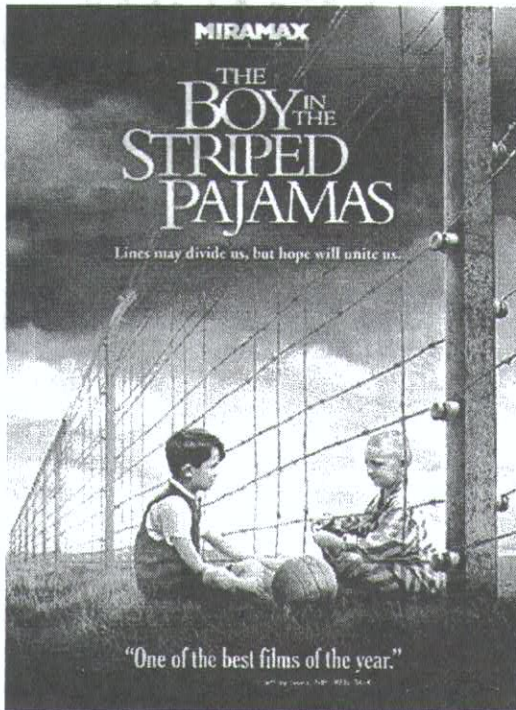
.....

6. The stripes seem a little faded, what does this mean?

.....

.....

Film Poster



Look at the film poster on the left. We have another character in the scene.

1. Who are these boys?

.....

.....

.....

2. Where are they?

.....

.....

.....

3. Are they brothers or friends?

.....

.....

4. What do you think the story will be about?

.....

.....

.....

Viewing: Setting

The setting in a piece of literature or film refers to the place and time of the story. Setting in a film is established through props, lighting, camera shots and music. The Boy in Striped Pyjamas is set in Germany during World War 2, roughly around 1940. This time frame is important because it helps to establish the historical context of the film. Within this setting there are smaller settings, for example the two houses where the family lives. In the beginning of the story they are in their home in Berlin and later they move to a house at another location where their father has to do 'important work'. The two houses have different atmospheres, which indicates that there will be a change in events and character development.

Use the Venn diagram below to compare and contrast the two houses.

